



JOHN
IN FRONT OF HIS
MONET OVER MONEY

“ELVIS UNDERSTOOD THE SANDWICH.

The King knew that the very purpose of a sandwich is to intertwine tastes and texture. He preferred the deep fried peanut butter and banana version; Dagwood preferred layers upon layers, capitalizing on the sandwich's versatile nature.

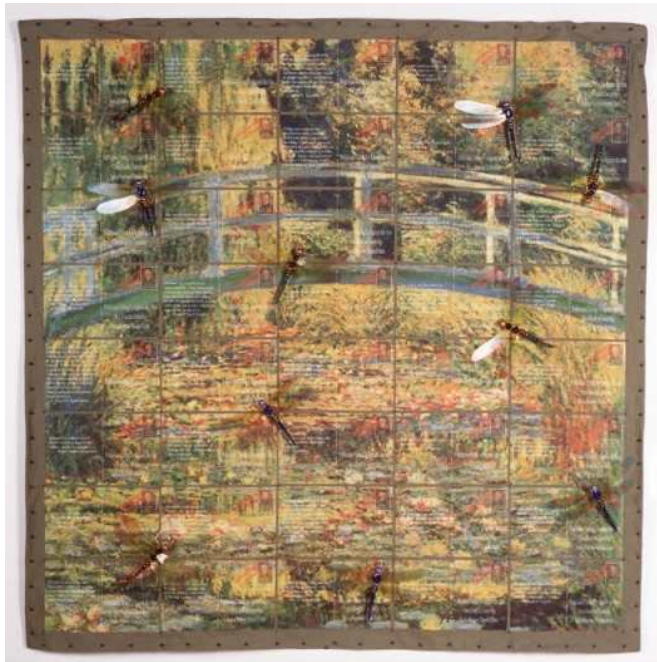
“I have chosen to make artworks that are a construction of layers on several different levels so that viewers can digest my work in much the same way that they would enjoy a well put together sandwich. But the strength of my work goes beyond stitching together layers of fabric. I like to use everyday objects from which I can create layers that are seen from different distances. The layers are seen - or not seen - depending on the distance that the viewer stand from the work. When close, the viewer sees a grid of some type; when viewed from afar, the overall image - often that of a simple icon - reveals itself. Some of the icons I have chosen in the past are a large one hundred dollar bill, a giant clock, and a stylized Monet water lily painting. As the viewers

approach the work, they realize that the overall layer is comprised of a bunch of smaller objects, such as postage stamps or post cards

“Using everyday recognizable objects or icons on my quilts makes for some interesting embellishing hurdles. Nylon netting and lots of close stitching is my preferred method of attaching oddly shaped or non-traditional materials.

“I use commonplace objects and recognizable icons to build a link with the viewer. Many viewers discover their own associations with these familiar objects like pennies and sugar packets, associations that help them form a personal explanation of what my work means to them. Frequently I will employ some sort of wit or a good pun that gives multiple meanings and the end result is a visual meal that produces a complex, personal and surprising combination of responses.”

john lefelhocz
IN THE SPOTLIGHT ATHENS, OH



MONET FOR NOTHING / INSUFFICIENT POSTAGE

*Materials : fabric, nylon mesh,
Czech, Japanese, German, and
Chinese beads, copper wire, paper,
clear transparency copies.
Dimensions: 44" x 43"*

*This work is part of
QUILT 21: AMERICAN ART QUILTS
FOR THE 21st CENTURY.*

*This collection will travel in its
entirety from January of 2001
through the summer of 2002.*

